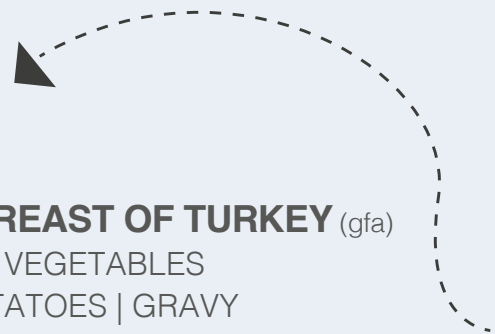




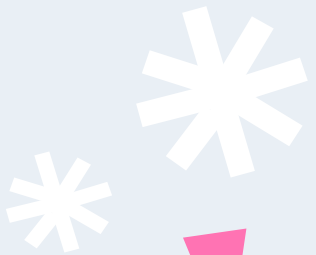
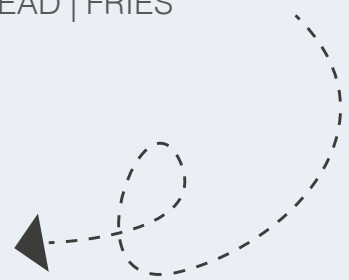
## MAINS

- ROAST BREAST OF TURKEY** (gfa)  
SEASONAL VEGETABLES  
ROAST POTATOES | GRAVY
- ROAST BEEF & GRAVY**  
SEASONAL VEGETABLES | MASH
- CLASSIC CHEESEBURGER**  
MILK BUN | FRIES
- BREADED CHICKEN STRIPS** (gfa)  
FRIES | CARROTS | PEAS
- CHEESY TOMATO PASTA** (v)  
GARLIC BREAD | FRIES



## STARTERS

- GARLIC BREAD** (v, gfa)  
WITH CHEESE
- FRESH FRUIT COCKTAIL** (ve)  
WITH STRAWBERRY COULIS
- MOZZARELLA STICKS** (v)  
WITH TOMATO DIP
- PIGS IN BLANKETS**  
WITH BBQ SAUCE



## SWEETS

- ICE CREAM & SWEETS SUNDAE** (v)  
DUO OF ICE CREAM | SWEETIE ASSORTMENT  
STRAWBERRY SAUCE
- WARM COOKIE DOUGH** (v)  
VANILLA ICE CREAM
- CHOCOLATE BROWNIE** (v)  
CHOCOLATE ICE CREAM | BERRIES

## DRINKS

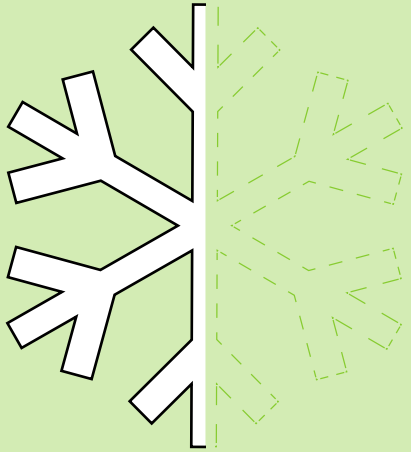
- SIMPLY FRUITY** £1.80  
ASK OUR TEAM FOR FLAVOURS
- GLASS OF PEPSI MAX, DIET PEPSI, LEMONADE, SODA, CORDIALS** £1.80
- BAMBINOCCHINO** £1  
WARM FROTHY MILK TOPPED WITH CHOCOLATE DUSTING
- EXPLORER HOT CHOC** £2  
WITH MARSHMALLOWS | WHIPPED CREAM  
MALTESERS



Please alert your server of any food allergies or intolerances that you have, and we will do our best to accommodate your needs. (v) vegetarian dish (ve) vegan dish | (gf) gluten free dish | (gfa) gluten free available.

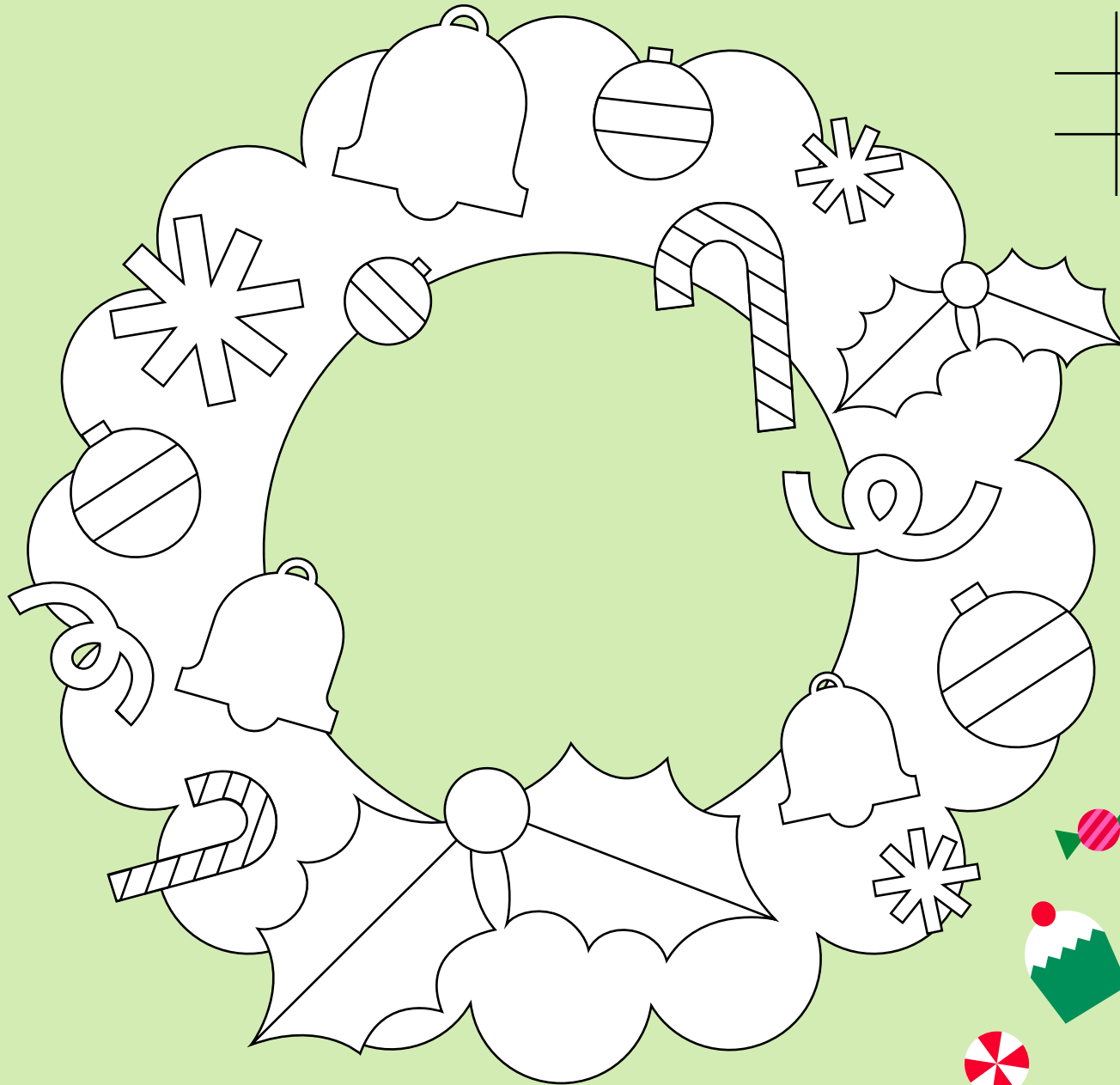
## FINISH THE PICTURE

by tracing on the line.

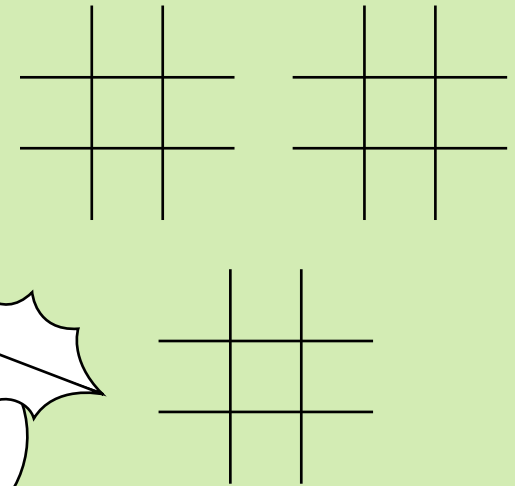


## COLOUR IN

the Christmas wreath.



## NAUGHTS AND CROSSES



## COLOUR AND MATCH

the picture to its shadow.



## CONNECT

two of the same picture.

